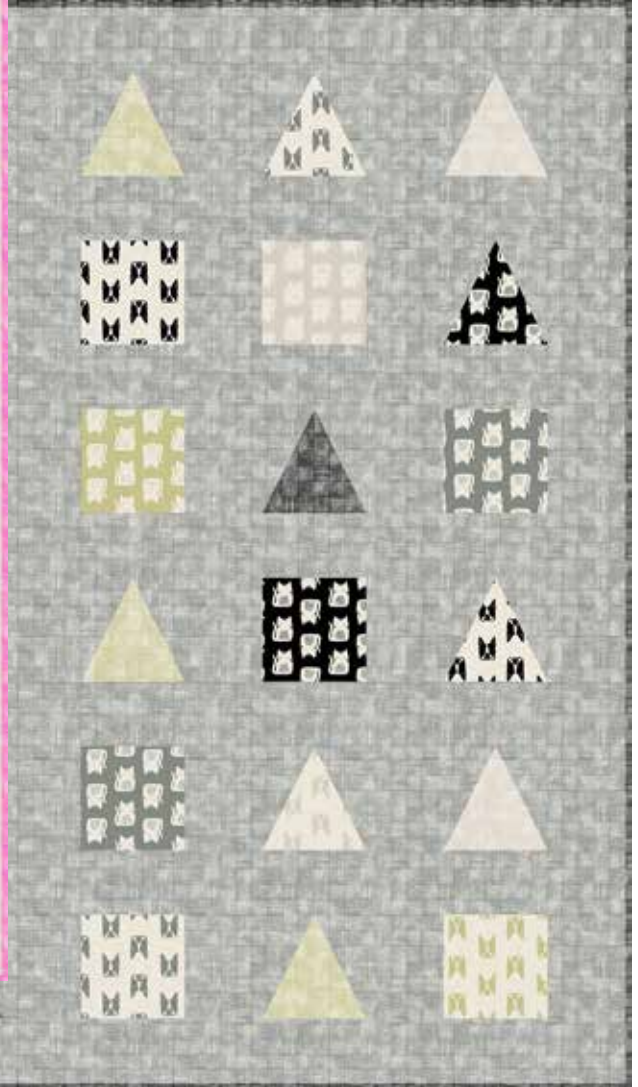
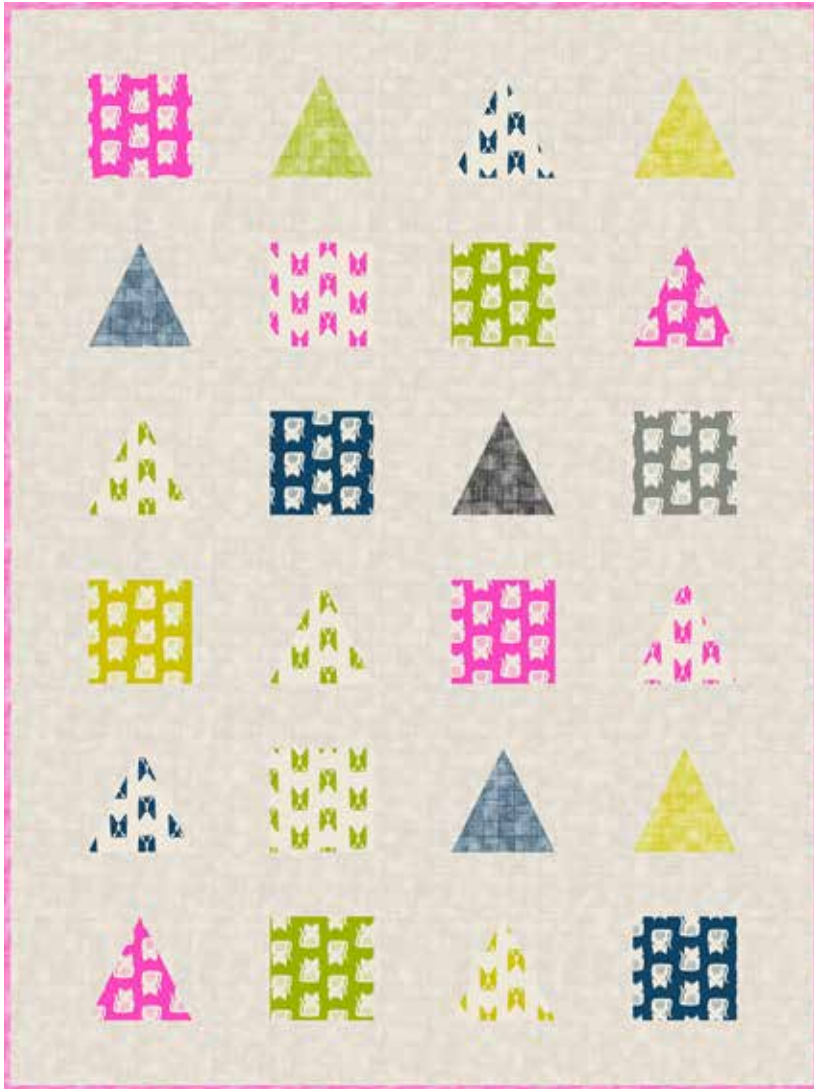


Cats and Dogs

BY SARAH GOLDEN



Quilt designed by:
Sarah Golden

Quilt Size: **62" x 83"**

andoverfabrics.com

About Cats and Dogs

We're excited to bring these block printed cats, dogs and grid patterns to quilting cotton for you. This collection has a few favorites from my first collection, Maker Maker, including my dog Captain, now in a whole rainbow of colors. This collection has so many fresh color choices, including a ton of neutrals, super functional! — Sarah Golden

andover

•
•
• makower.uk
•

Free Pattern Download Available

1384 Broadway New York, NY 10018
Tel. (800) 223-5678 • andoverfabrics.com

Cats and Dogs Quilt



Introducing Andover Fabrics new collection: **CATS AND DOGS** by Designer Name

Quilt designed by Sarah Golden

Quilt finishes 62" x 83" • Blocks: 8" x 8"

*What a fun way to honor our feline and canine friends.
The easy blocks and open setting go together quickly and
allow the fun prints to take center stage.*

Fabric Requirements for Pink Quilt

		Yardage	Fabric	
Fabric A	setting	3¾ yards	8456-C1	
Fabric B	binding	⅝ yard	8456-E	
Fat ¼s	blocks	fat ¼ yard each		
	8456-B	8456-G	8456-K	8456-V
	8965-B	8965-E	8965-G	8965-V
	8966-B	8966-C	8966-E	8966-G
	8966-V			
Backing		5 yards	8966-C1	

Fabric Requirements for Gray Quilt

		Yardage	Fabric	
Fabric A	setting	3¾ yards	8456-C	
Fabric B	binding	⅝ yard	8456-K	
Fat ¼s	blocks	fat ¼ yard each		
	8456-C1	8456-K	8456-N1	8965-C
	*8965-C1	8965-K	8965-N1	8966-C
	8966-C1	8966-K	8966-N1	
Backing		5 yards	*8965-C1	

Yardage is sufficient to alter the number of patches from each fabric.

Cutting Directions

Note: Read assembly directions before cutting patches. All measurements are cut sizes and include ¼" seam allowances. A fat ¼ is an 18" x 20"-22" cut. WOF designates the width of fabric from selvedge to selvedge (approximately 42" wide).

[Alternative cutting for Gray Quilt is in brackets]

Fabric A

Cut (7) sashes 5½" x 62½", cut lengthwise

Cut (30) rectangles 6½" x 8½"

Cut a total of (14) Template 2

Cut a total of (14) Template 2 reversed

Fabric B

Cut (8) strips 2½" x WOF for binding

[Cut (3) Template 1 from this fabric for gray quilt]

Fat ¼s

Refer to the quilt to determine how many patches to cut of each fabric.

Cut a total of (14) Template 1 (read Step 1)

[Cut a total of (11) Template 1]

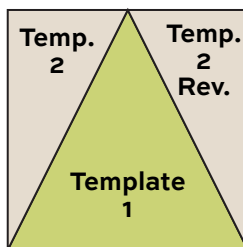
Cut a total of (10) squares 8½"

Backing

Cut (2) panels 35" x 90", pieced to fit quilt top with overlap on all sides

Making the Quilt

1. To make patterns for template 1, on a piece of acrylic plastic, draw the template 1 triangle, including all markings. Reverse template 1, align the dashed "place on fold" line, and draw the other half of the pattern. Make an acrylic pattern for template 2. With a sharp point, make holes at the dots.
2. Refer to the quilt to determine the patches to cut from each fabric. From each fat ¼ yard, you can cut a total of 4 Template 1 and/or 8½" squares. Feel free to alter the number of patches from each fabric. Mark the dots on the wrong side of each fabric patch. Matching dots, sew a template 2 and 2 reversed to each template 1 patch to make a block. Make 14 pieced blocks.



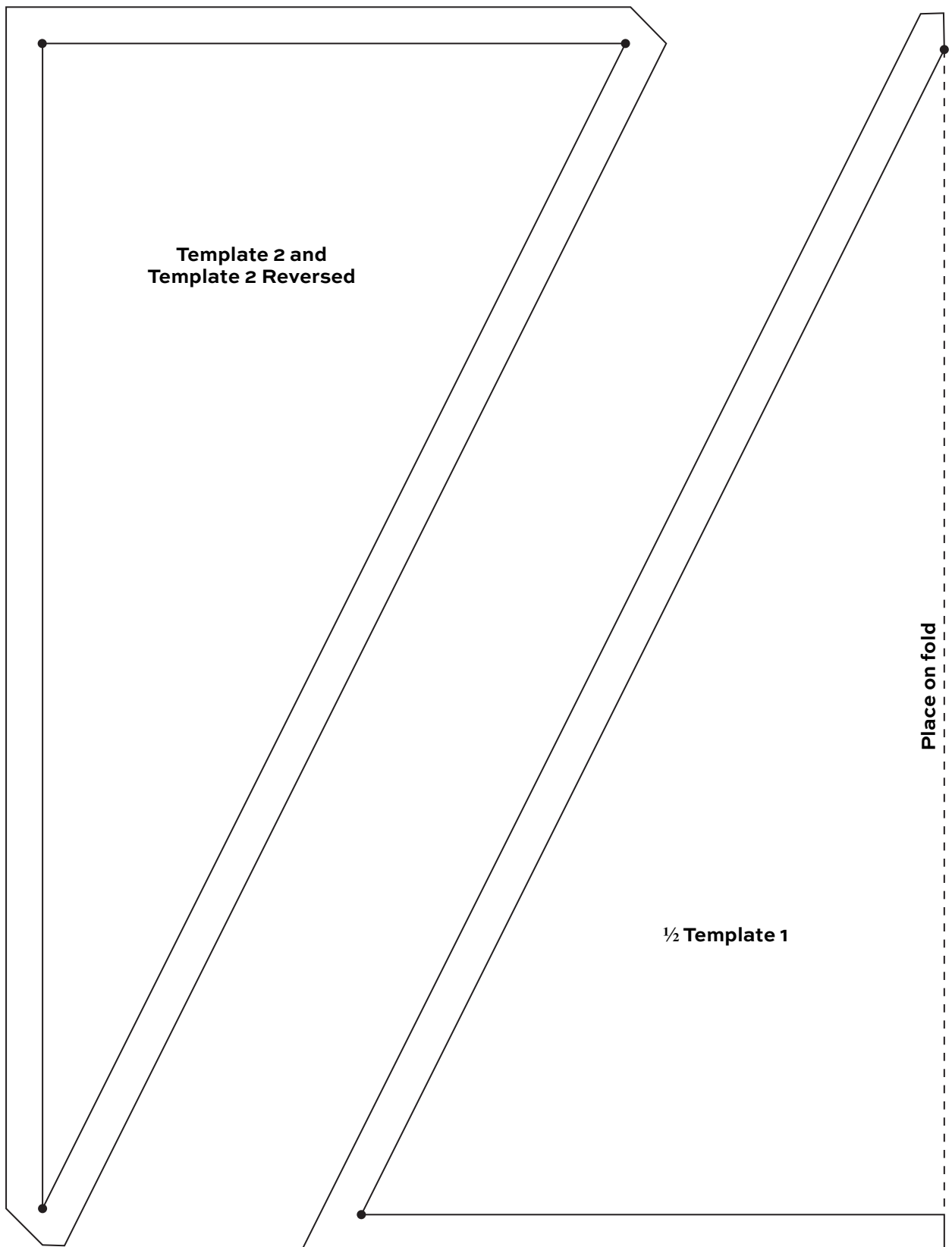
Block

3. Referring to the Quilt Diagram, arrange the Fabric A rectangles, the 8½" squares, and the pieced blocks in 6 rows. Feel free to arrange the blocks and patches as you wish, or as shown. Once you are satisfied with the arrangement, join the blocks and patches in rows.
4. Join the rows with the long sashes in between.

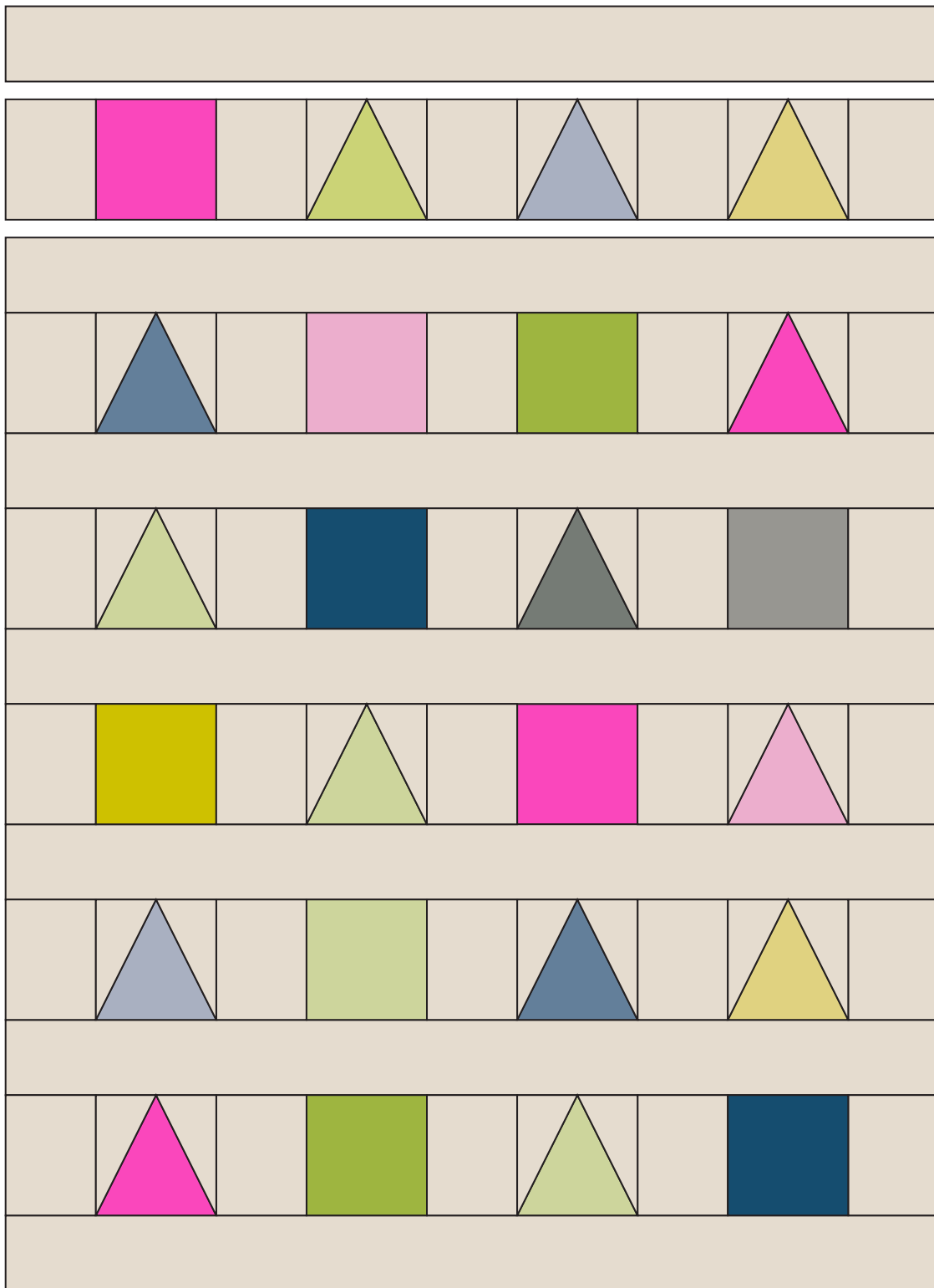
Finishing the Quilt

5. Layer the quilt with batting and backing and baste. Quilt in the ditch around sashes and patches. Quilt around the printed motifs in the blocks. Quilt the Fabric A patches and sashes as you wish.

Cats and Dogs Quilt



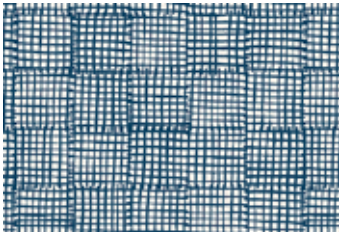
Cats and Dogs Quilt



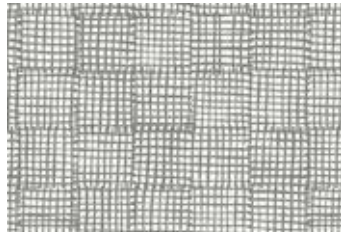
Quilt Diagram

Cats and Dogs

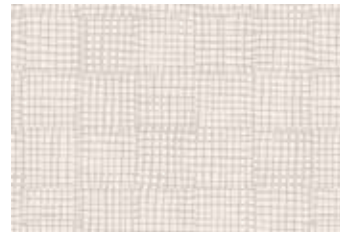
SARAH GOLDEN



8456-B*



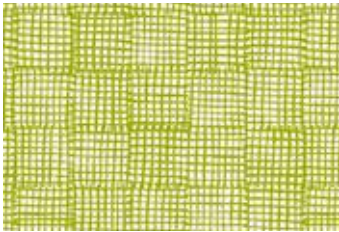
8456-C



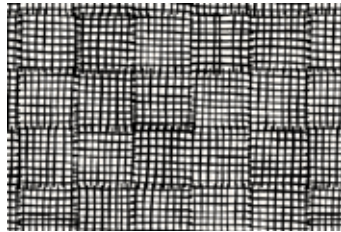
8456-C1*



8456-E*



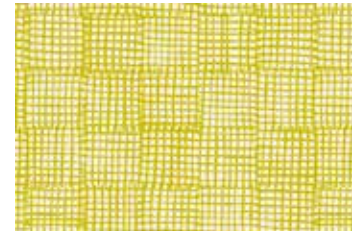
8456-G*



8456-K*



8456-N1



8456-V*



8965-B*



8965-C



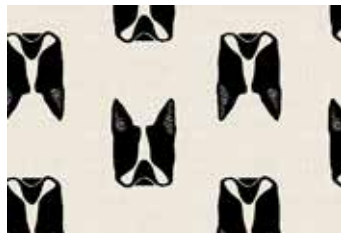
8965-C1



8965-E*



8965-G*



8965-K



8965-N1



8965-V*



8966-B*



8966-C*



8966-C1*



8966-E*



8966-G*



8966-K



8966-N1



8966-V*

*Indicates fabrics used in featured quilt pattern. Fabrics shown are 25% of actual size.

andover

makower uk

Free Pattern Download Available

1384 Broadway New York, NY 10018
Tel. (800) 223-5678 • andoverfabrics.com